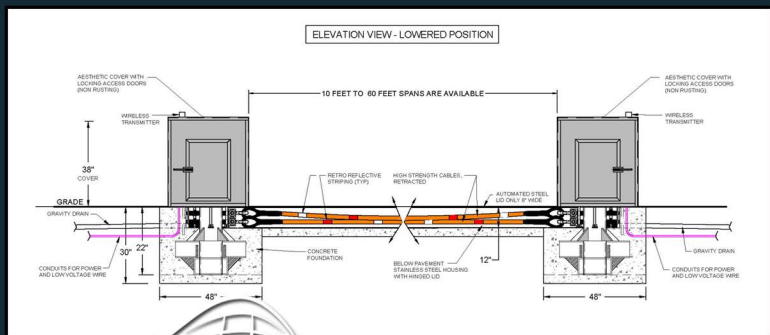
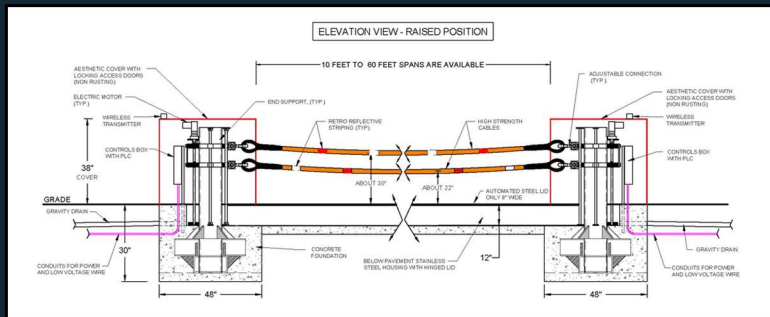


CROWD PROTECTION BARRIER MODEL CPB-EL-500

GROUND RETRACTABLE
ELECTRICALLY OPERATED



- ◆ ASTM F2656-07 M50 P2 (K12) Engineered. Stops 15,000 lb vehicle at 50mph. Uses crash tested and proven components.
- ◆ Clear span barrier lengths from 10 ft to 60 ft.
- ◆ Non-intrusive, small footprint.
- ◆ Aesthetic enclosures with locking access doors.
- ◆ Ground retractable barrier with only 8" wide continuous cover flush with roadway.
- ◆ Highly visible barrier with retro-reflective striping.
- ◆ Bi-directional stopping capabilities.
- ◆ Prefabricated and pre-assembled upon delivery to facilitate quick installation.
- ◆ All electric, automated operations. Power requirement is two 220/230/240 volt, 20 amp single phase and two 110 volt, 20 amp.
- ◆ Custom control panels and alarms.
- ◆ Unaffected by water, salt, ice, and other weather.
- ◆ Optional UPS backup power, wireless remote controllers, traffic signals, signs, and audible alarms.
- ◆ Optional cold weather package including insulated enclosures, thermostat controlled heaters, seals on doors, and additional 110 volt, 20 amp circuits.



TYPICAL CONTROLLERS

